



Falcon

01752 600444

14 Honicknowle Lane

Plymouth, PL2 3QR

Guide Price £300,000-£325,000





In Brief

A fabulous 3 bedroomed 1930's semi with 3 reception rooms, gorgeous garden & Garage

Reception Rooms Living room, dining room & breakfast room

Bedrooms Three lovely bedrooms

Heating Gas central heating

Parking Driveway parking & Garage

Area 1092 Sq ft

Council Tax C

Tenure Freehold

Description

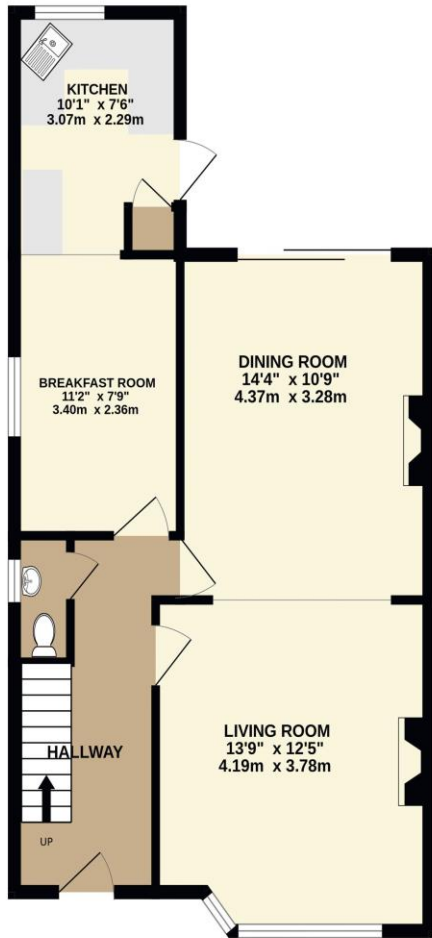
Located in this excellent and convenient position is this 1930's 3 bedroomed semi detached family home. The property has been in the same family for approximately 63 years and has clearly been a much loved home throughout those years. Off the reception hallway you have a downstairs wc. The living room is a good size and a lovely bright sunny room which opens into the separate dining room. There is a breakfast room which leads through to the kitchen. The kitchen is well fitted with a good range of units with a door leading to the rear garden. Off the first floor landing there is a useful store cupboard and a separate W/C. The bathroom is fitted with a modern bath and wash hand basin with a contemporary mixer shower over the bath. There are three bedrooms with the main two being doubles and the third a good single at the front. The property comes with gas central heating and upvc double glazing. Outside to the front there is a large parking area with a driveway running up the side of the house to the garage. The garage measures 15'4 x 8'9 with an electric roller door and internal power. The rear garden is a really good size and beautifully landscaped. There is a good sized area of lawn plus two large patio seating areas. The garden gets the sun for most of the day. This really is a fabulous property in a great location, close to some excellent schools shops and facilities. There is no onward chain!

Need A Mortgage?

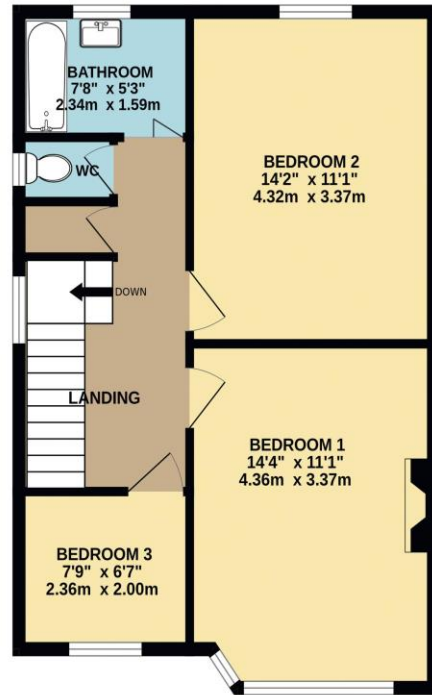
Don't pay more than you need to for your mortgage advice: ours is only £195 paid when you move!

Floor Plans

GROUND FLOOR
582 sq.ft. (54.1 sq.m.) approx.



1ST FLOOR
510 sq.ft. (47.4 sq.m.) approx.



TOTAL FLOOR AREA: 1092 sq.ft. (101.4 sq.m.) approx.
Made with Metropix ©2024



Fixed Price Conveyancing

A complete solution from just £600 with No sale – No Fee



We have not tested any apparatus, equipment, fixtures and fittings or services and so cannot verify that they are connected, in working order or fit for the purpose. Neither have we had sight of the legal documents to verify the Freehold or Leasehold status of any property; or sight of any consents, including Planning Permissions, building Regulations and Breaches of Covenants that may be required for alterations to the property. A buyer is advised to obtain verification from their Solicitor and/or Surveyor. Items shown in photographs are NOT included unless specifically mentioned within the Sales Particulars. Any floor plans on these details are not drawn to scale and are intended for guidance only

Falcon Property is an Introducer to Bradleys Financial Management Ltd. They are appointed representatives of Sesame Ltd who are authorised and regulated by the Financial Services Authority. Bradleys do not charge for mortgage advice, however a fee paying option is available. Typical fee is £195. Bradleys Financial Management: 16 Mannamead Road, Mutley, Plymouth, PL4 7AA

Your home may be repossessed if you do not keep up repayments on your mortgage.

